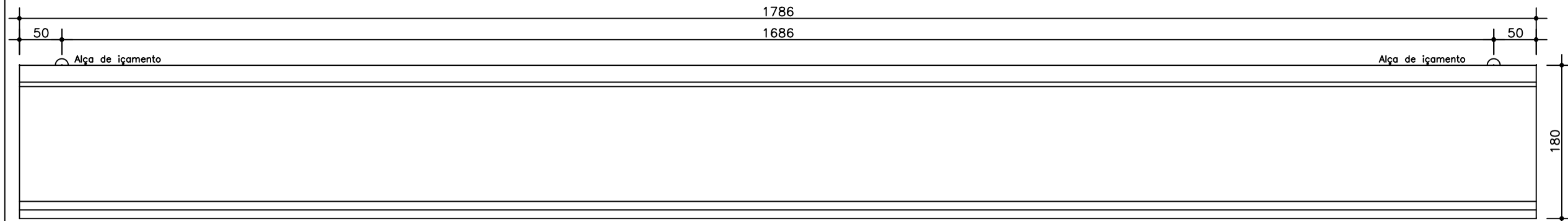
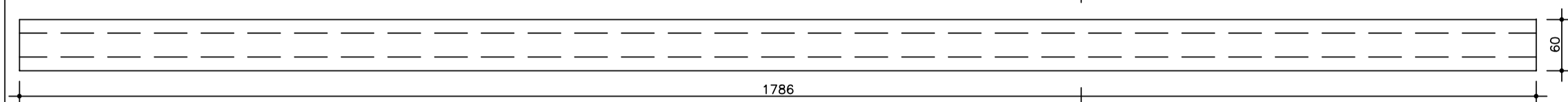


VP1-b

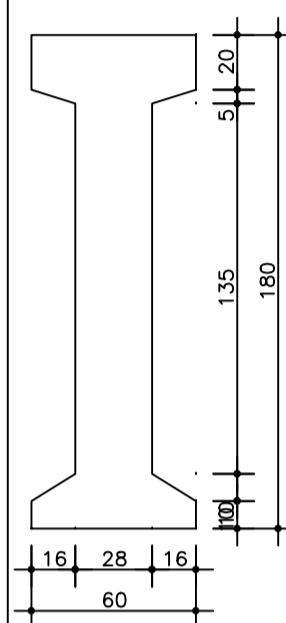
ELEVAÇÃO



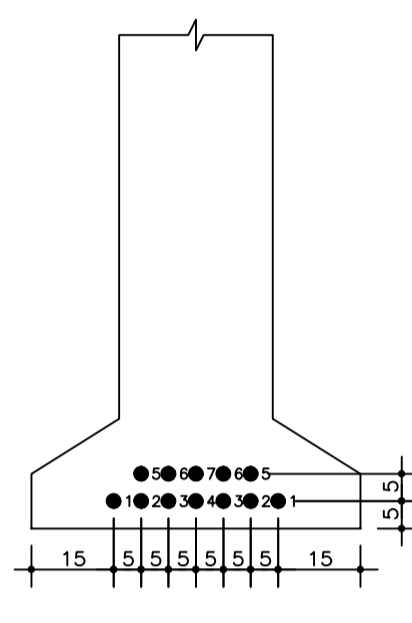
PLANTA



SEÇÃO



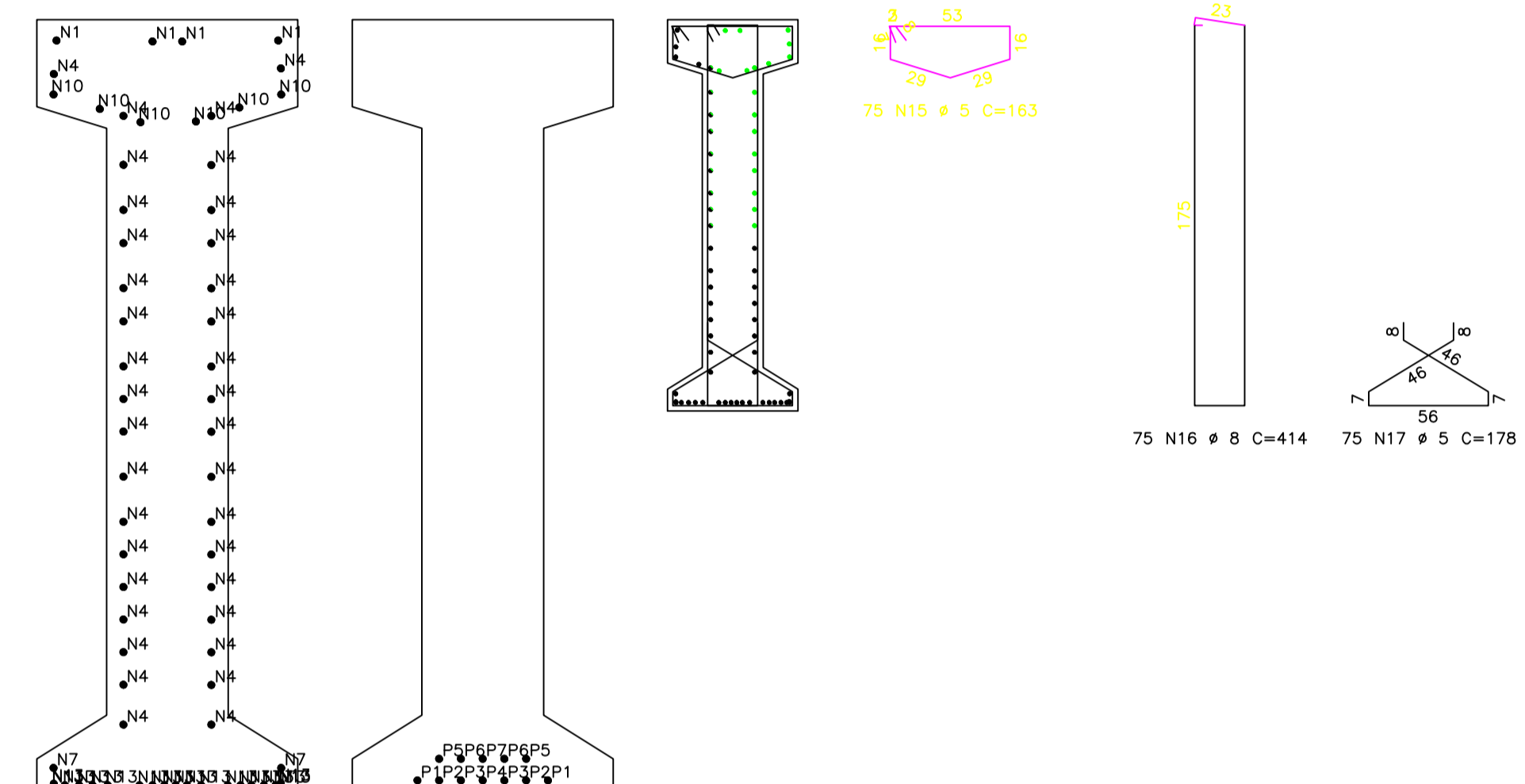
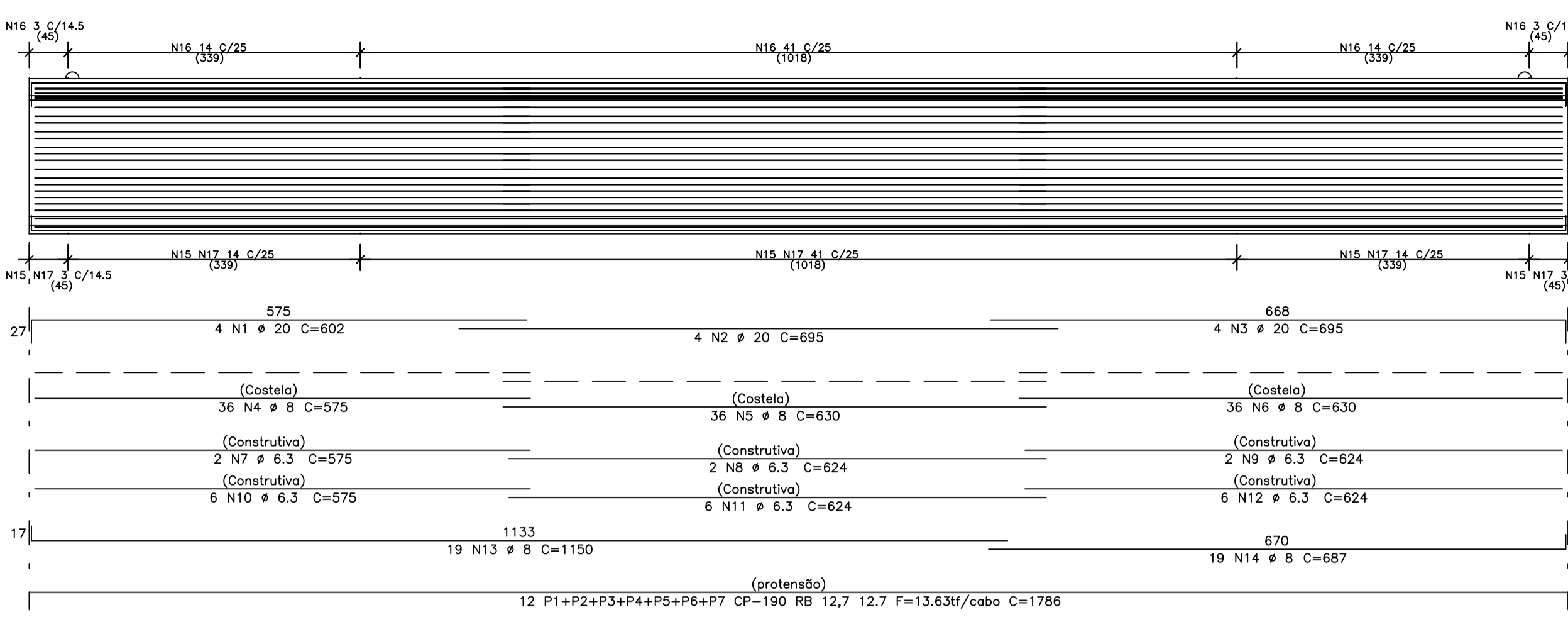
CABOS INF.



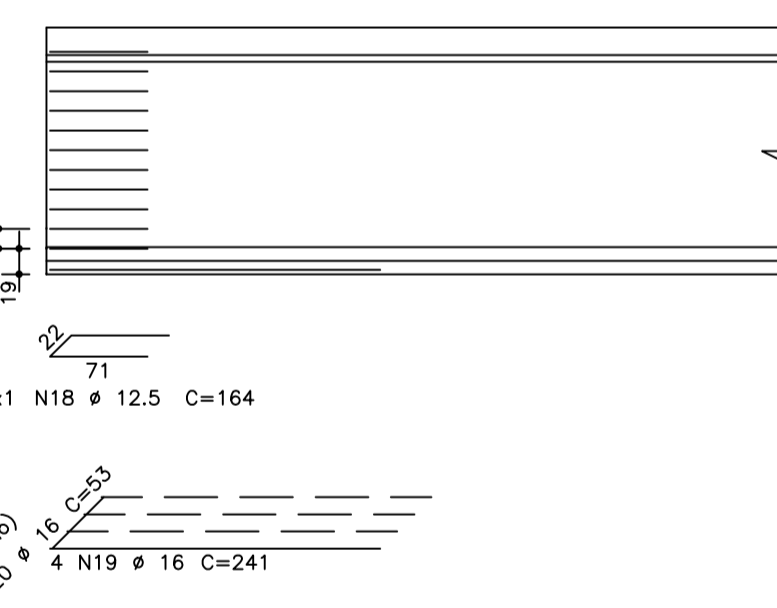
CABOS		DADOS		fck= 40 MPa		vol.= 11,1 m³		cob.= 2,5 cm	
o	usado	fcj= 20 MPa	peso= 27,9 tf	ganc.=	cm				
1	2	3	4	5	6	7	8	9	10

CABOS	FORÇA DE PROTENSÃO (tf/cabo)	1	2	3	4	5	6	7	8	9	10	CABOS PESO(kg)
FORÇA DE PROTENSÃO (tf/cabo)	13,6	13,6	13,6	13,6	13,6	13,6	13,6	13,6	13,6			
BITOLA DOS CABOS (mm)	12,7	12,7	12,7	12,7	12,7	12,7	12,7	12,7	12,7			
ISOLAMENTO (cm)	E	0	0	0	0	0	0	0	0			169
	D	0	0	0	0	0	0	0	0			

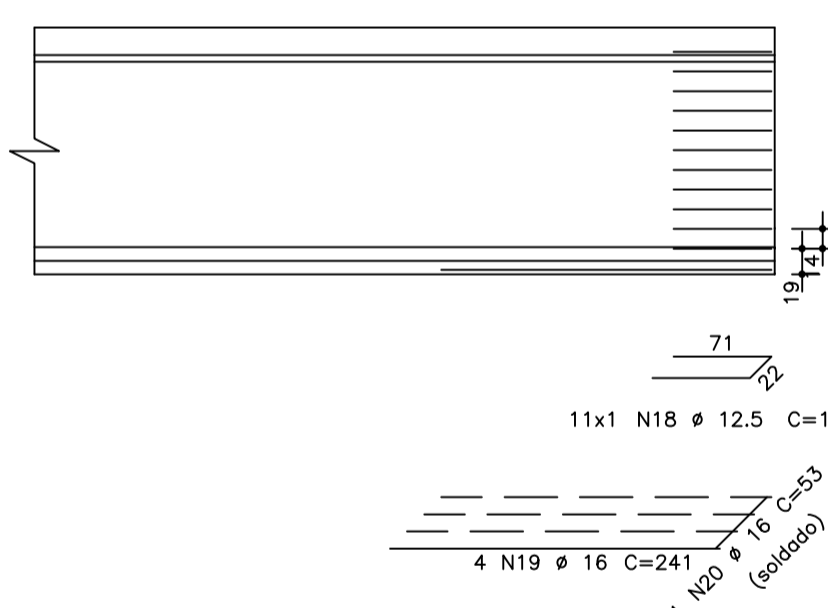
VP1-b



DETALHE INICIAL



DETALHE FINAL



AÇO	POS	BIT (mm)	QUANT	COMPRIMENTO UNIT (cm)	TOTAL (cm)
50A	1	20	4	602	2408
50A	2	20	4	695	2780
50A	3	20	4	695	2780
50A	4	8	36	975	20700
50A	5	8	36	630	22680
50A	6	8	36	630	22680
50A	7	6.3	2	575	1150
50A	8	6.3	2	624	1248
50A	9	6.3	2	624	1248
50A	10	6.3	6	575	3450
50A	11	6.3	6	624	3744
50A	12	6.3	6	624	3744
50A	13	8	19	1150	21850
50A	14	8	19	687	13053
60B	15	5	75	163	12225
50A	16	8	75	414	31050
60B	17	5	75	178	13350
50A	18	12.5	22	164	3608
50A	19	16	8	241	1928
50A	20	16	2	53	106

RESUMO AÇO CA 50-60			
AÇO	BIT (mm)	COMPR (m)	PESO (kg)
60B	5	256	39
50A	6.3	146	36
50A	8	1320	521
50A	12.5	36	35
50A	16	20	32
50A	20	80	196
Peso Total	60B =		39 kg
Peso Total	50A =		821 kg

fck 250. kg/cm2

Schuring & Schuring

**Schuring & Schuring Ltda.**  
 Escritório Técnico B.E.SCHURING - Projetos de Engenharia  
 Av. XV de Novembro, 489 - Porto 2o. Andar - Cuiabá MT  
 Fone:(065) 321 9959 - Fax:(065) 623 5066 - Email - schuring@terra.com.br

PROJETO ESTRUTURAL	PROPRIETÁRIO: PREFEITURA MUNICIPAL DE VARZEA GRANDE	OBRA: PONTE - PREFEITURA VG
	RESP. TEC. EXECUÇÃO:	END.: VARZEA GRANDE
	AUTORES DO PROJETO: <b>Benedito Eiseu Schuring</b> Eng.Civil- CREA 715/D-MT	ASSUNTO: DET. ARM VIGA PRE
	<b>Andre Luiz Schuring</b> Eng.Civil- CREA 8697/D-MT	PECAS DETALHADAS VP1-b
	FCR: ESCALA: 1:50	DIRETOS AUTORES RESERVADOS VERIFICAR MEDIDAS NA OBRA ARQUIVO: 25/07/2016
		FOLHA No. 05