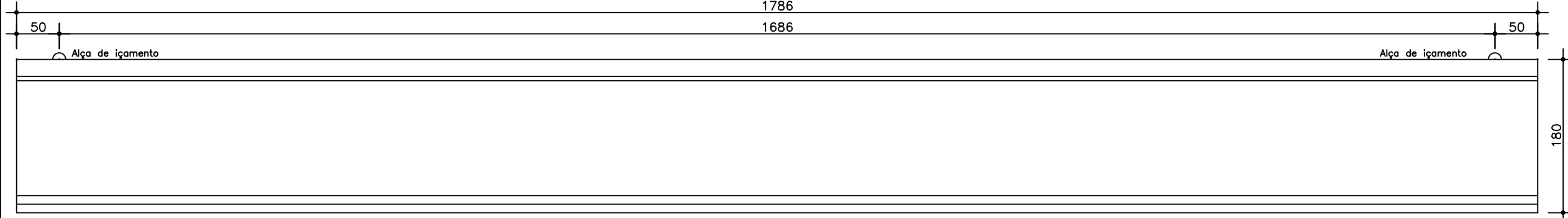
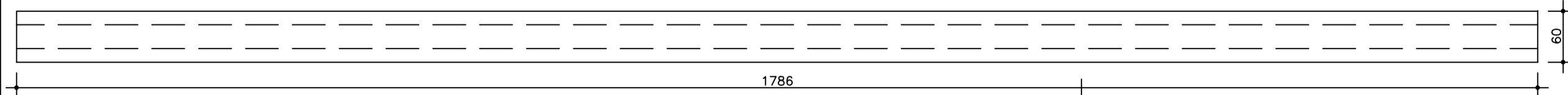


VP1-a

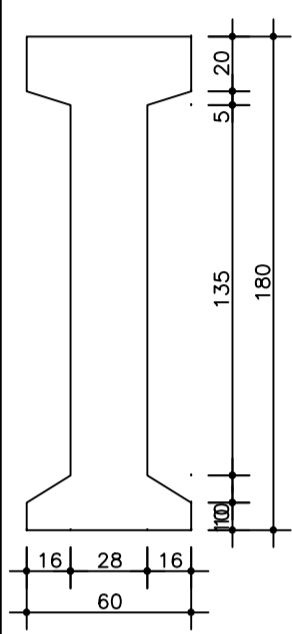
ELEVAÇÃO



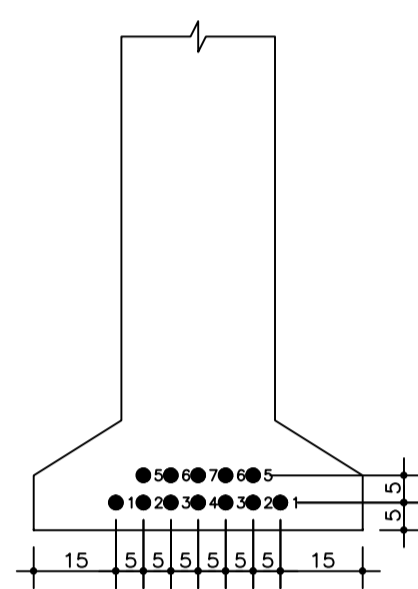
PLANTA



SEÇÃO



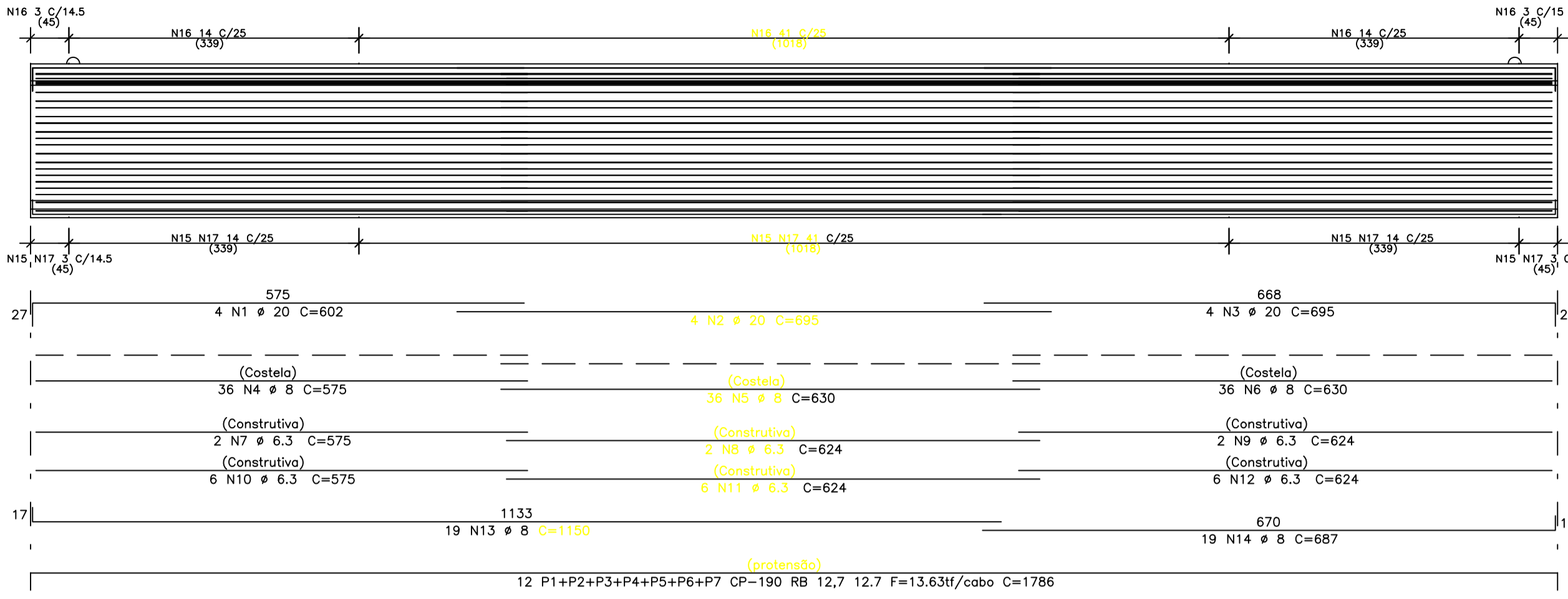
CABOS INF.



CABOS		DADOS	
○	●	fck= 40 MPa	vol.= 11,1 m ³
∅	∅	fy= 20 MPa	peso= 27,9 tf
			genc.= cm

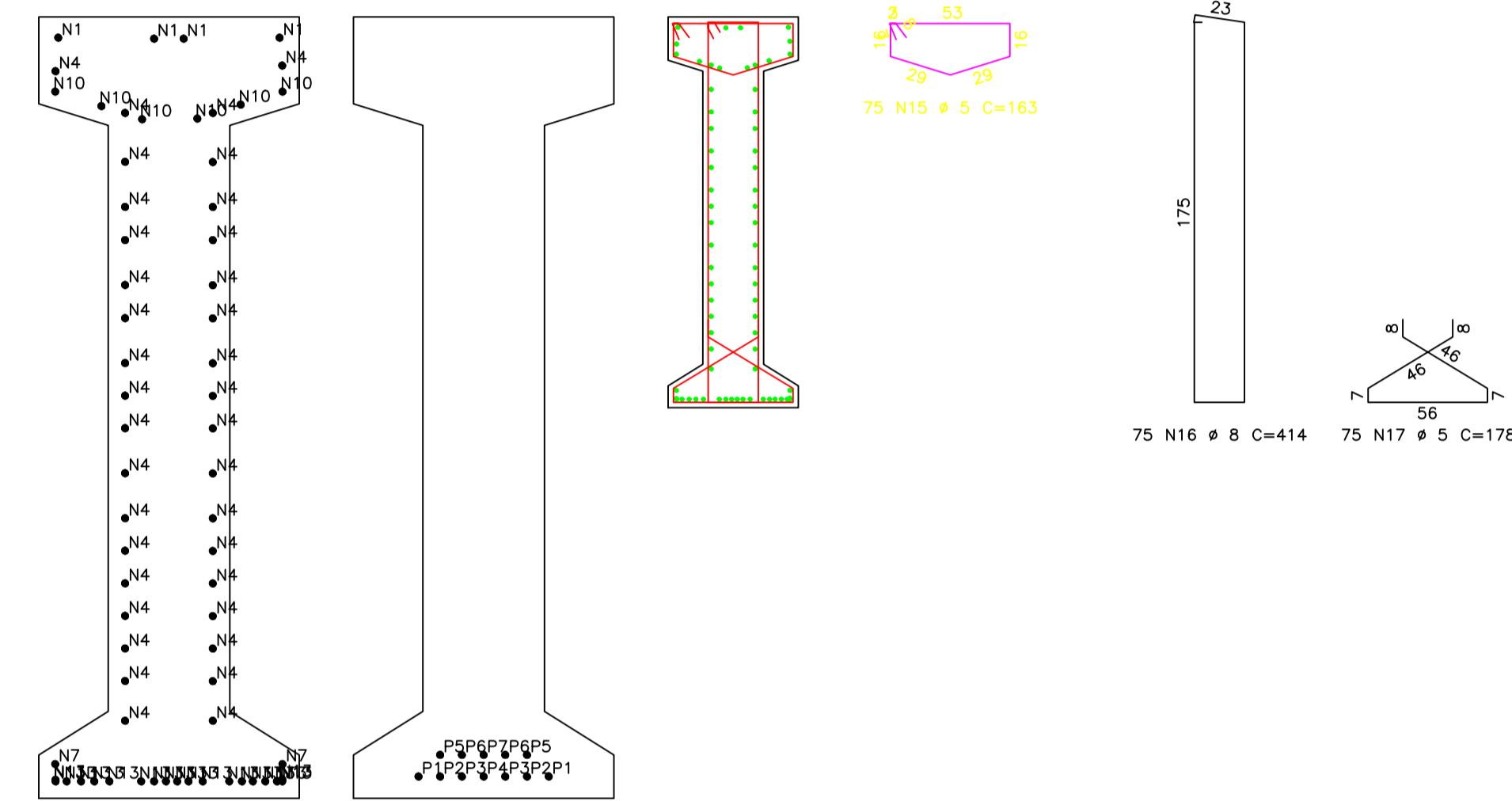
CABOS	1	2	3	4	5	6	7	8	9	10	CABOS PESO(kg)
FORÇA DE PROTENSÃO (tf/cabo)	13,6	13,6	13,6	13,6	13,6	13,6	13,6	13,6	13,6	13,6	
BITOLA DOS CABOS (mm)	12,7	12,7	12,7	12,7	12,7	12,7	12,7	12,7	12,7	12,7	
ISOLAMENTO (cm)	E	0	0	0	0	0	0	0	0	0	169
	D	0	0	0	0	0	0	0	0	0	

VP1-a

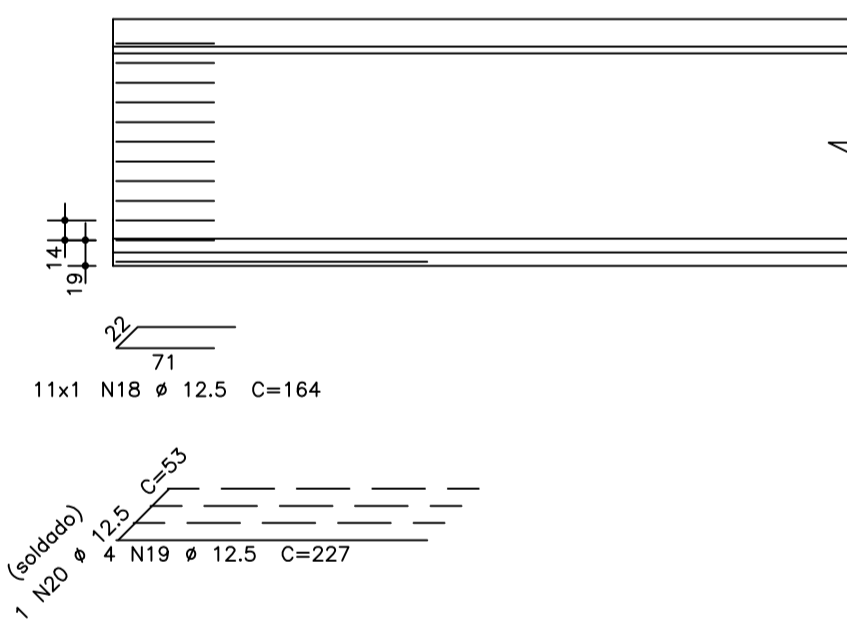


AÇO	POS	BIT (mm)	QUANT	COMPRIMENTO UNIT (cm)	TOTAL (cm)
VP1-a					
50A	1	20	4	602	2408
50A	2	20	4	695	2780
50A	3	20	4	695	2780
50A	4	8	36	575	20700
50A	5	8	36	630	22680
50A	6	8	36	630	22680
50A	7	6.3	2	575	1150
50A	8	6.3	2	624	1248
50A	9	6.3	2	624	1248
50A	10	6.3	6	575	3450
50A	11	6.3	6	624	3744
50A	12	6.3	6	624	3744
50A	13	8	19	1150	21850
50A	14	8	19	687	13053
60B	15	5	75	163	12225
50A	16	8	75	414	31050
60B	17	5	75	178	13350
50A	18	12.5	22	164	3608
50A	19	12.5	8	227	1816
50A	20	12.5	2	53	106

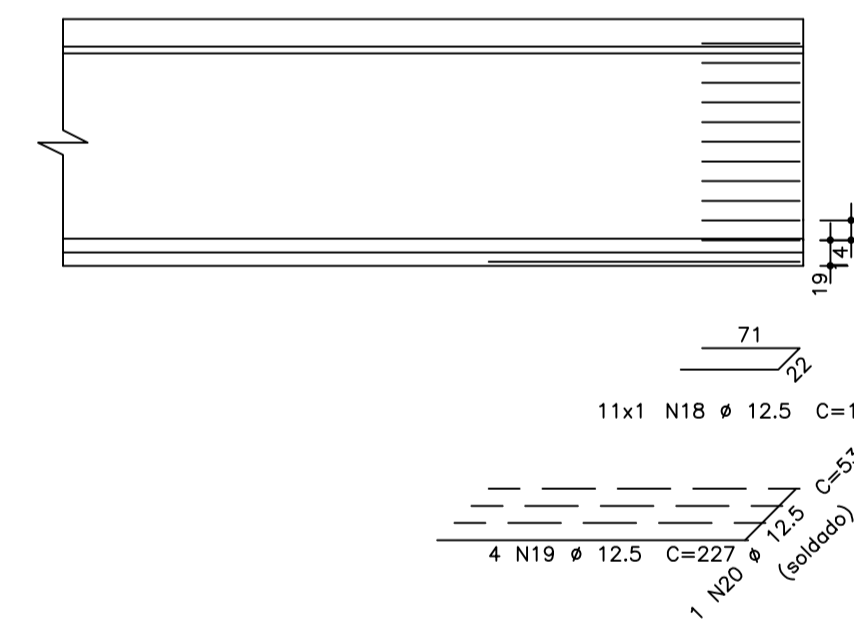
RESUMO AÇO CA 50-60			
AÇO	BIT (mm)	COMPR (m)	PESO (kg)
60B	5	256	39
50A	6.3	146	36
50A	8	1320	521
50A	12.5	55	5.3
50A	20	80	196
Peso Total	60B =		39 kg
Peso Total	50A =		807 kg



DETALHE INICIAL



DETALHE FINAL



fck 250. kg/cm²

		Schuring & Schuring Ltda. Escritório Técnico B.E.SCHURING - Projetos de Engenharia Av. XV de Novembro, 489 - Porto 2o. Andar - Cuiabá MT Fone:(065) 321 9959 - Fax:(065) 623 5066 - Email - schuring@terra.com.br	
PROJETO ESTRUTURAL	PROPRIETÁRIO: PREFEITURA MUNICIPAL DE VARZEA GRANDE	OBRA: PONTE - PREFEITURA VG	
	RESP. TEC. EXECUÇÃO:	END.: VARZEA GRANDE	
	AUTORES DO PROJETO: Benedito Eiseu Schuring Eng.Civil- CREA 715/D-MT Andre Luiz Schuring Eng.Civil- CREA 8697/D-MT	ASSUNTO: DET. ARM VIGA PRE	
	FCK: ESCALA: 1:50	DIREITOS AUTORA RESERVADOS VERIFICAR MEDIDAS NA OBRA ARQUIVO:	DATA: 25/07/2016