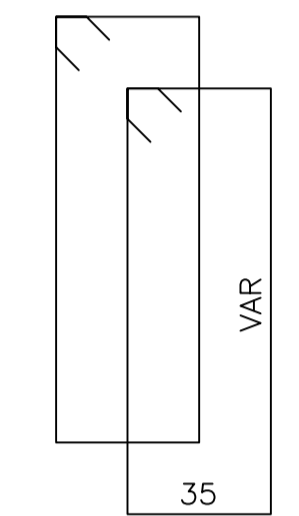
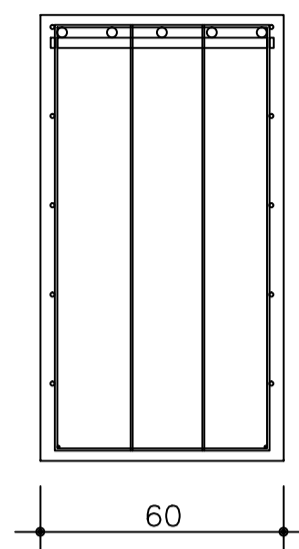
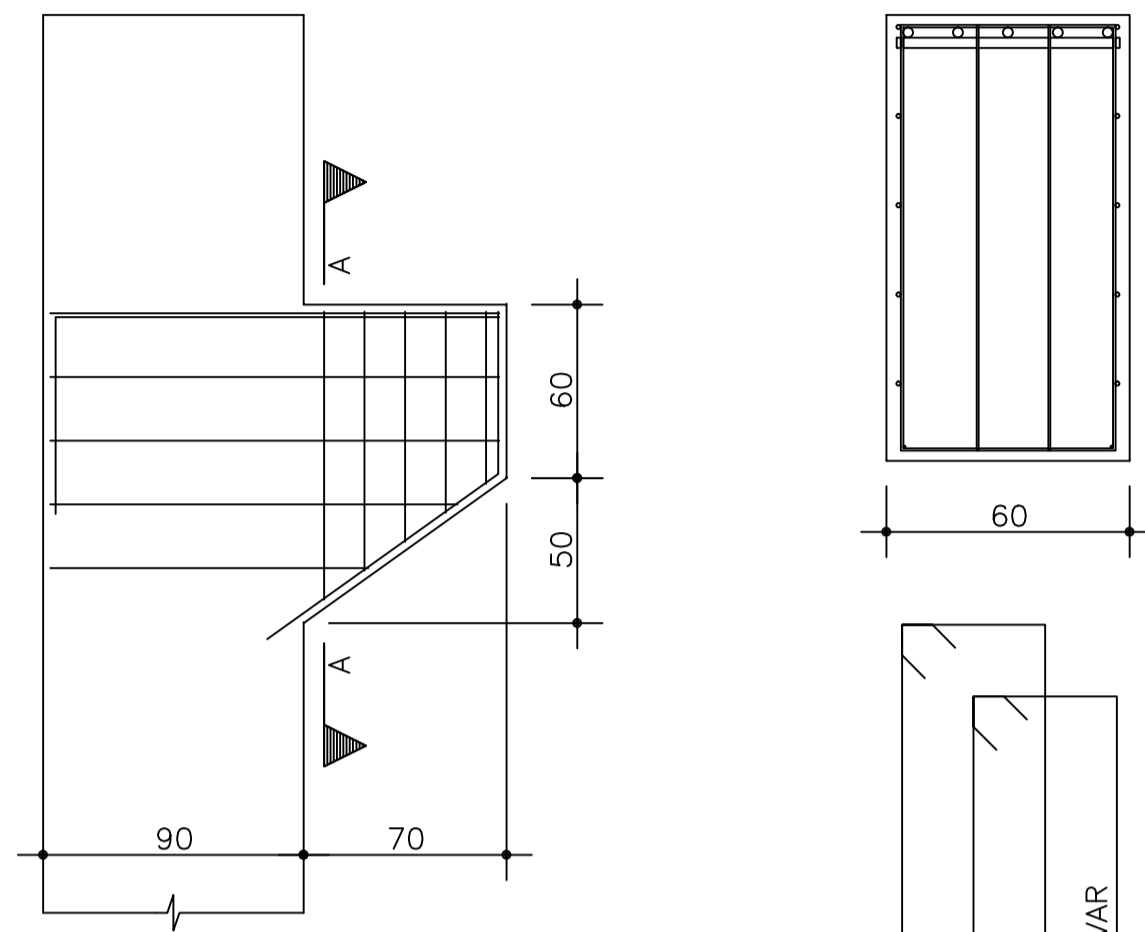
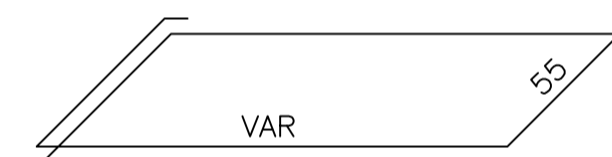
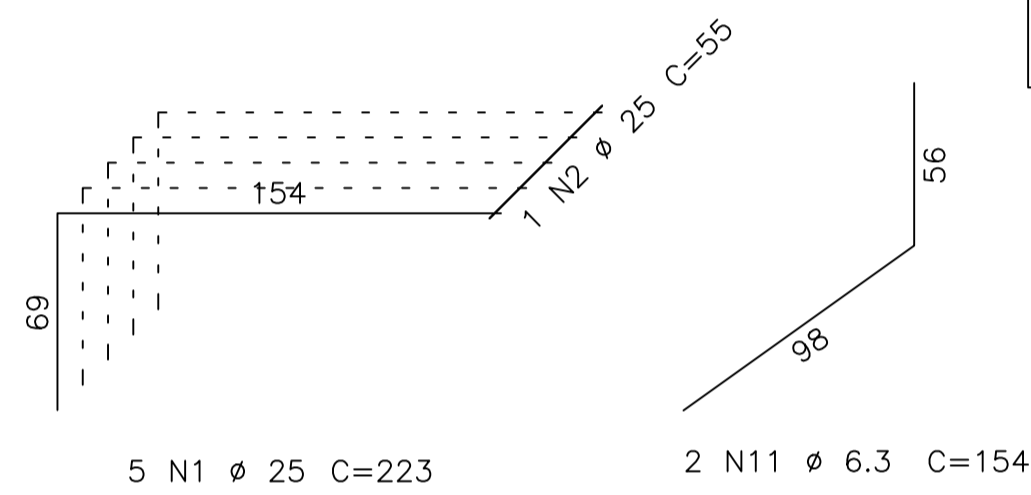


C1
4x
4x

Corte A-A

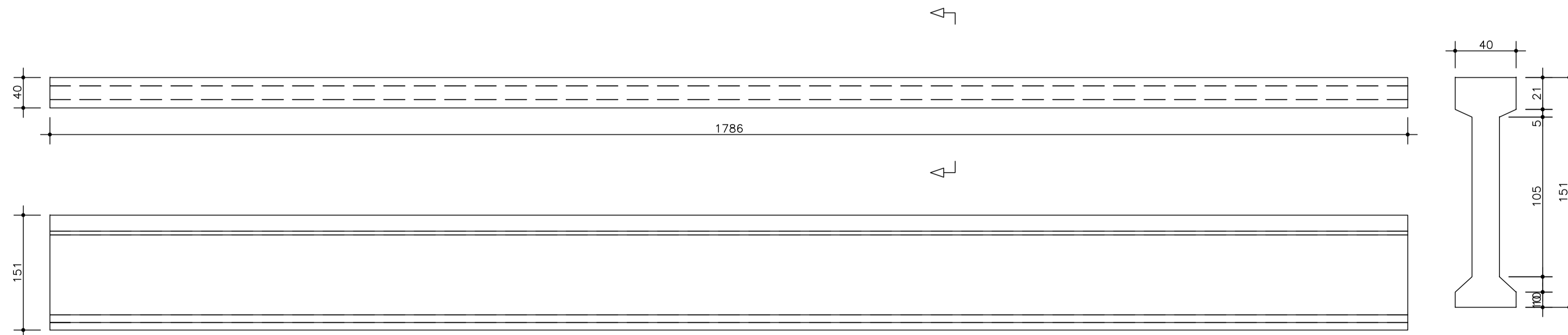


- 2x1 N6 ϕ 6.3 C=284
- 2x1 N7 ϕ 6.3 C=264
- 2x1 N8 ϕ 6.3 C=244
- 2x1 N9 ϕ 6.3 C=224
- 2x1 N10 ϕ 6.3 C=204



- 3 N3 ϕ 10 C=498
- 1 N4 ϕ 10 C=470
- 1 N5 ϕ 10 C=408

VP1



Pavimento	Quant	Volume unit m3	Volume total m3	Peso unit tf	Peso total tf
TABULEIRO	2	6.37	12.73	15.92	31.84
Totais	2		12.73		31.84

AÇO	POS	BIT (mm)	QUANT	COMPRIMENTO	
				UNIT (cm)	TOTAL (cm)
C1 (X4)					
50A	1	25	20	223	4480
50A	2	25	4	55	220
50A	3	10	12	498	5976
50A	4	10	4	470	1880
50A	5	10	4	408	1632
50A	6	6.3	8	284	2272
50A	7	6.3	8	264	2112
50A	8	6.3	8	244	1952
50A	9	6.3	8	224	1792
50A	10	6.3	8	204	1632
50A	11	6.3	8	154	1232

RESUMO AÇO CA 50-60			
AÇO	BIT (mm)	COMPR (m)	PESO (kg)
50A	6.3	110	27
50A	10	95	59
50A	25	47	180
Peso Total 50A =			266 kg

fck 250. kg/cm2

PROJETO ESTRUTURAL			Schuring & Schuring Ltda. Escritório Técnico B.SCHURING - Projetos de Engenharia Av. XV de Novembro, 489 - Porto 2o. Andar - Curitiba MT Fone:(065) 321 9959 - Fax:(065) 623 5066 - Email - schuring@terra.com.br	
	PROJETO:	PROPRIETÁRIO:	OBRA:	
		PREFEITURA MUNICIPAL DE VARZEA GRANDE	PONTE - PREFEITURA VG	
	RESP. TEC. EXECUÇÃO:		END.:	VARZEA GRANDE
AUTORES DO PROJETO:	ASSUNTO:			
Benedito Eiseu Schuring Eng.Civil- CREA 715/D-MT	DET. FORMA VIGA PRE DET. ARM BLOCO CONSOLO			
Andre Luiz Schuring Eng.Civil- CREA 8697/D-MT	FICAS DETALHADAS C1 / VP1			
	FCK:	DIRETOS AUTOMAS RESERVADOS VERIFICAR MEDIDAS NA OBRA	DATA: 25/07/2016	
	ESCALA: 1:50	ARQUIVO:	FOLHA No. 03	