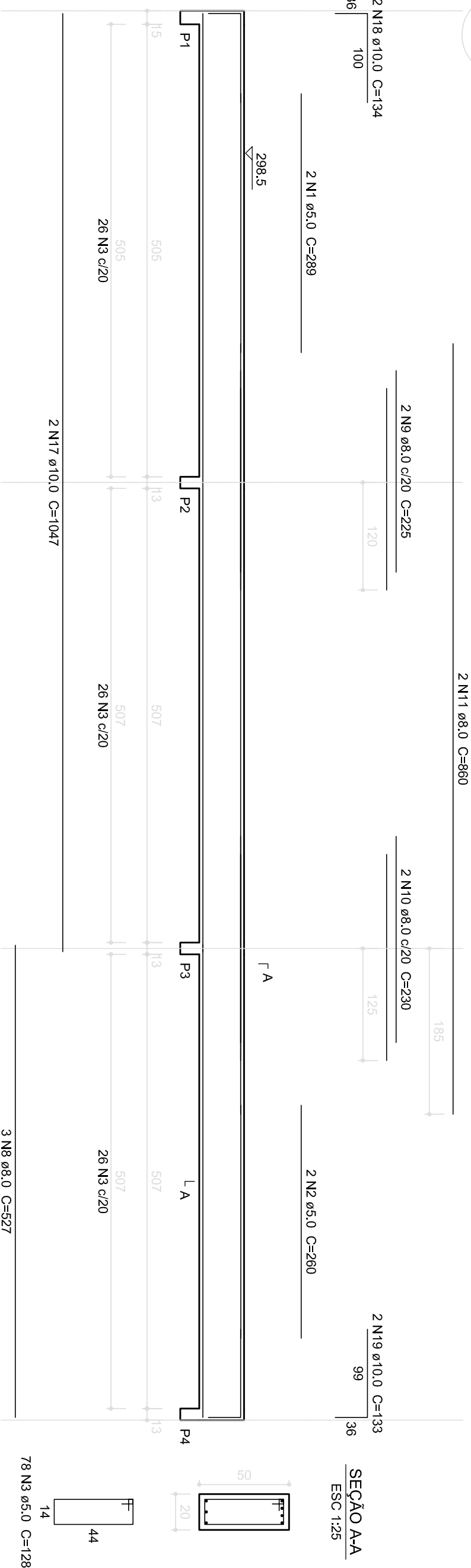
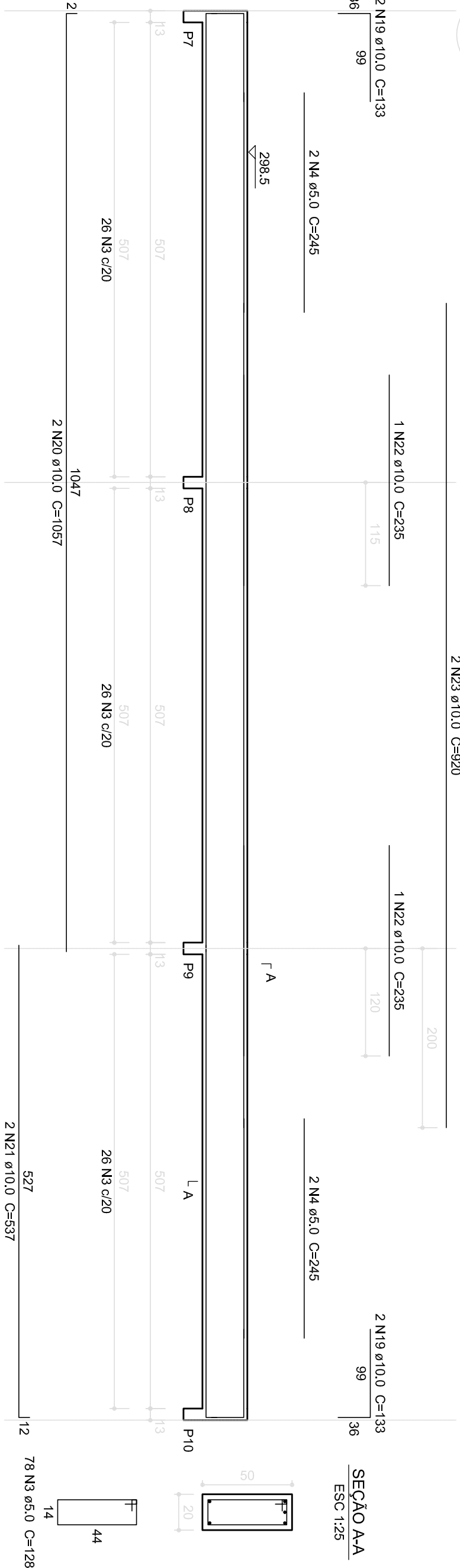


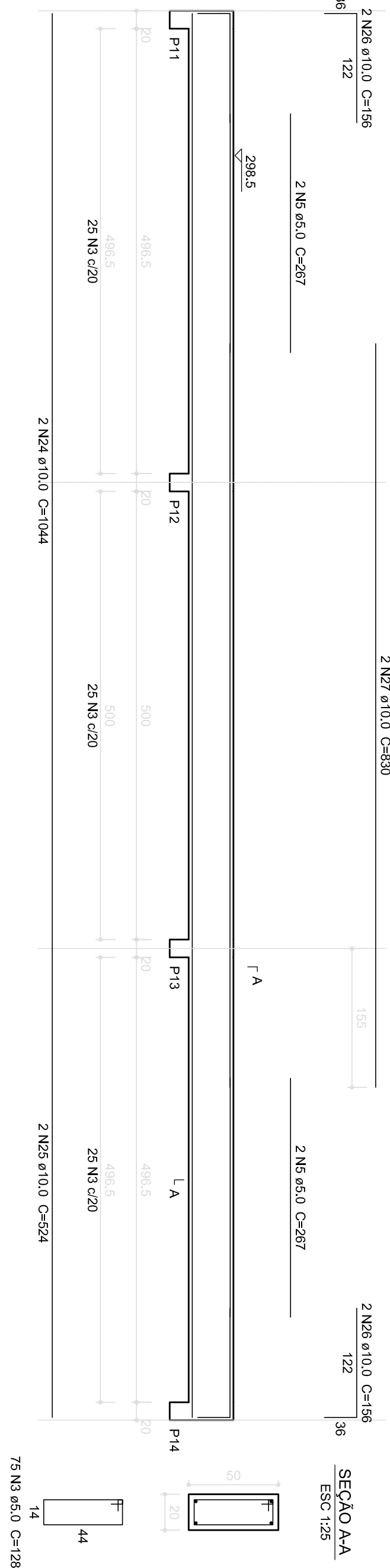
V1
ESC 1:50



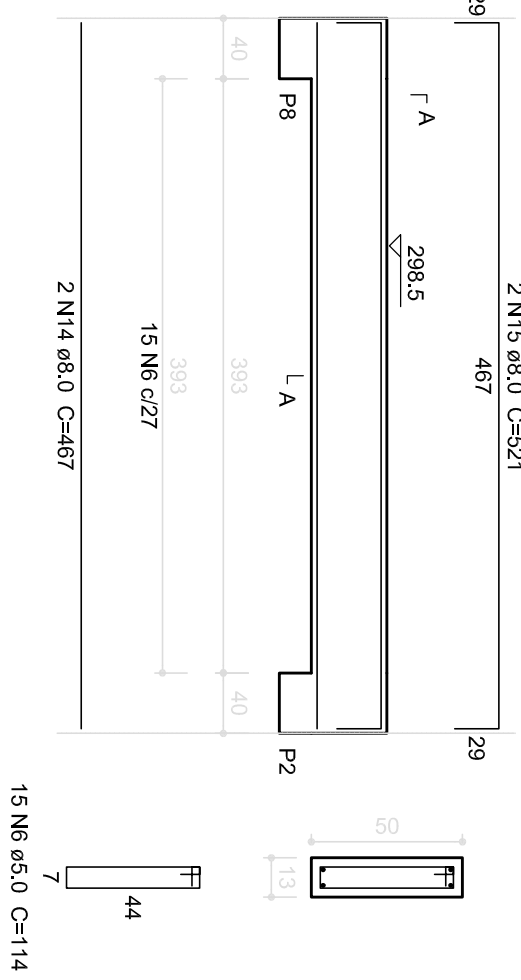
V2
ESC 1:50



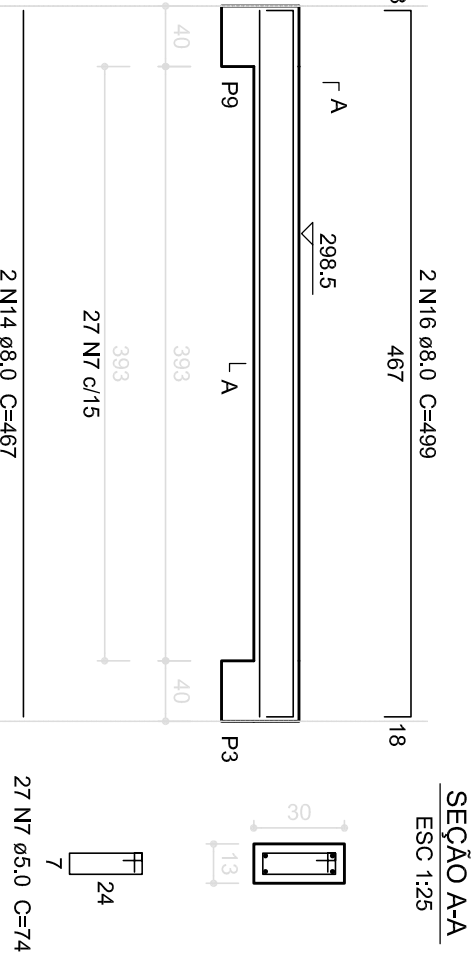
V3
ESC 1:50



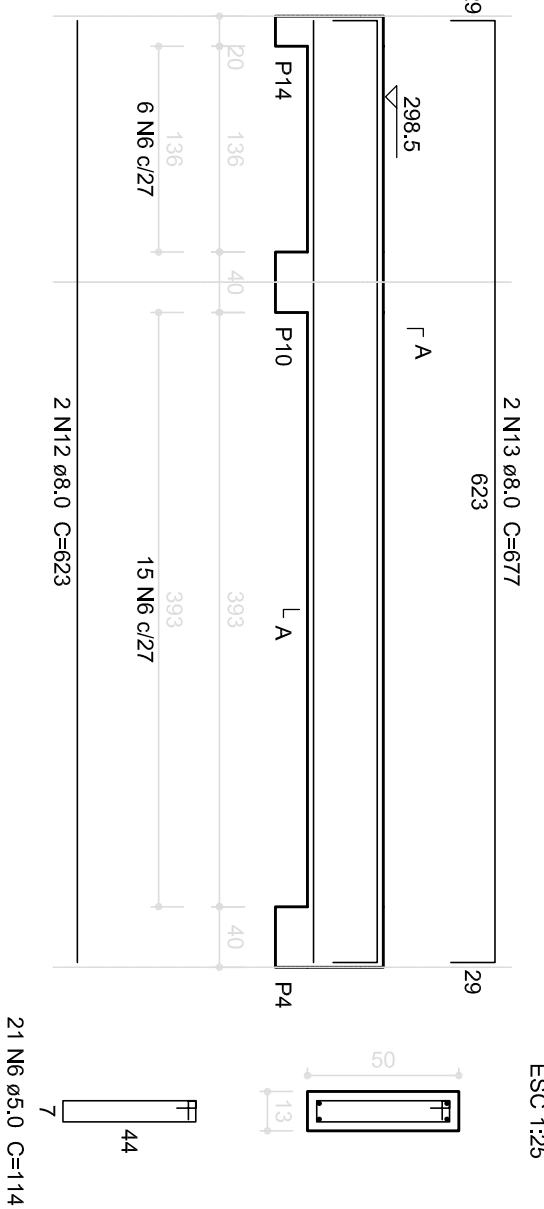
V5
ESC 1:50



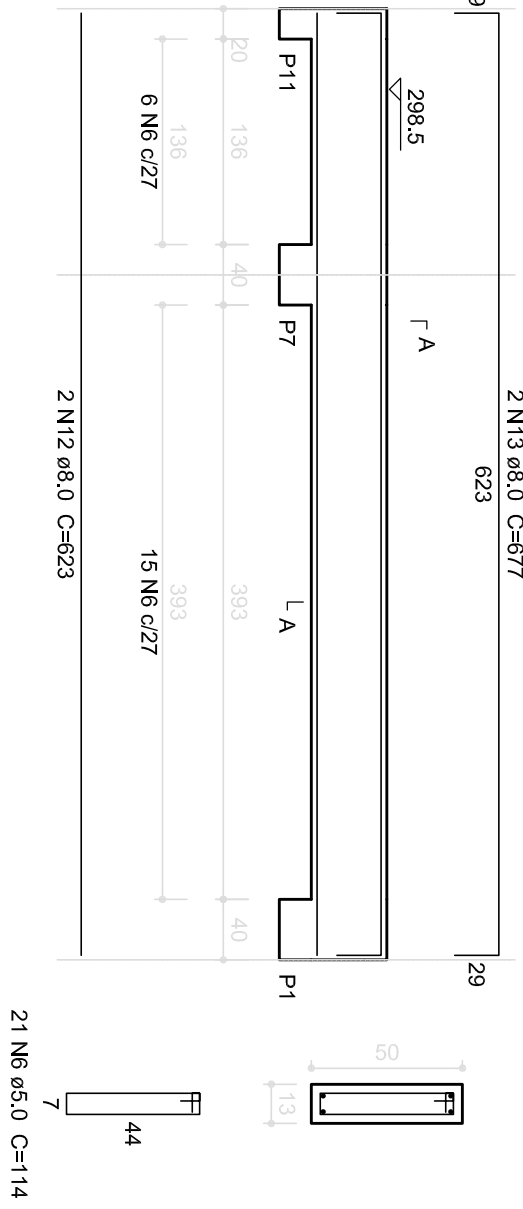
V6
ESC 1:50



V7
ESC 1:50



V4
ESC 1:50



1
VIGAS NÍVEL 298.5
ESCALA: INDICADA

Relação do aço

ACO	N	DIAM	QUANT	UNIT	C.TOTAL
CA60	1	5,0	2	(cm) 578	
	2	5,0	2	(cm) 289	
	3	5,0	231	128	29568
	4	5,0	4	245	980
	5	5,0	4	267	1068
CA50	6	5,0	57	114	6488
	7	5,0	7	144	1008
	8	8,0	3	527	1581
	9	8,0	2	225	450
	10	8,0	2	230	460
	11	8,0	2	860	1720
	12	8,0	4	623	2492
	13	8,0	2	133	268
	14	8,0	4	467	1748
	15	8,0	2	521	1042
	16	8,0	2	499	998
	17	10,0	2	1047	2094
	18	10,0	2	134	268
CA40	19	10,0	6	133	798
	20	10,0	2	1407	274
	21	10,0	2	537	1074
	22	10,0	2	235	470
	23	10,0	2	920	1840
	24	10,0	2	1044	2088
	25	10,0	2	524	1048
CA80	26	10,0	4	524	1624
	27	10,0	2	830	1650

Resumo do aço

ACO	DIAM	C.TOTAL	PESO
CA60	(mm) 8,0	133,2	(kg) 52,6
CA50	10,0	140,8	86,9
CA80	5,0	412,1	63,5
PESO TOTAL		(kg)	
CA50	139,5		
CA80	63,5		

Volume de concreto (C=25) = 6,03 m³
Área de forma = 73,64 m²

PROJETO PADRÃO - FNDE

MUNICÍPIO – UF:

PROPRIETÁRIO:

ENDEREÇO:

PROPRIETÁRIO

RESP. TÉCNICO

CAU/CREA

CAU/CREA

DLFO

CAU/CREA

OBSERVAÇÕES:

RA